



Adaptation Station

Explore real and replica animal tracks, furs, and/or skulls to learn how Alaskan wildlife have uniquely adapted to thrive in their environment. At the station, a Naturalist will engage students with short activities and answer questions.

Program Options:
(choose one or multiple topics)

- Tracks
- Skulls
- Furs
- A specific species or adaptation of choice

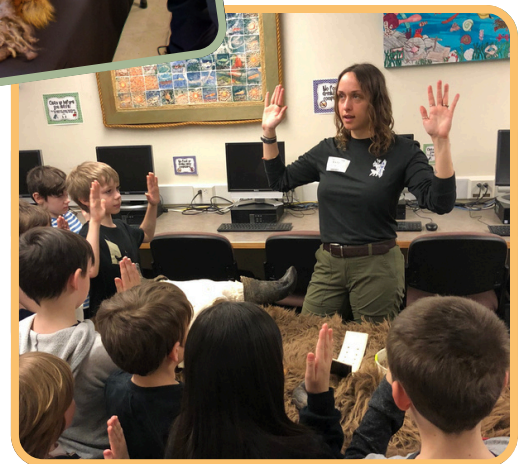
Program Length: Booked in 1-hour increments. This program is designed for groups to interact with on a rolling basis.

Grades: all ages

Objective: Students can identify adaptations and how they benefit Alaskan animals.

Relevant Learning Standards: 3-LS3-2, 4-LS1-1

Outreach option: This program can be led at AWCC during a field trip or travel to your school or organization. Ideal for special events or STEM nights.



Submit a program request form at
www.alaskawildlife.org/education



**ALASKA
WILDLIFE**
CONSERVATION CENTER

Contact the Education Department at
education@alaskawildlife.org or 907-783-0058 ext. 8